
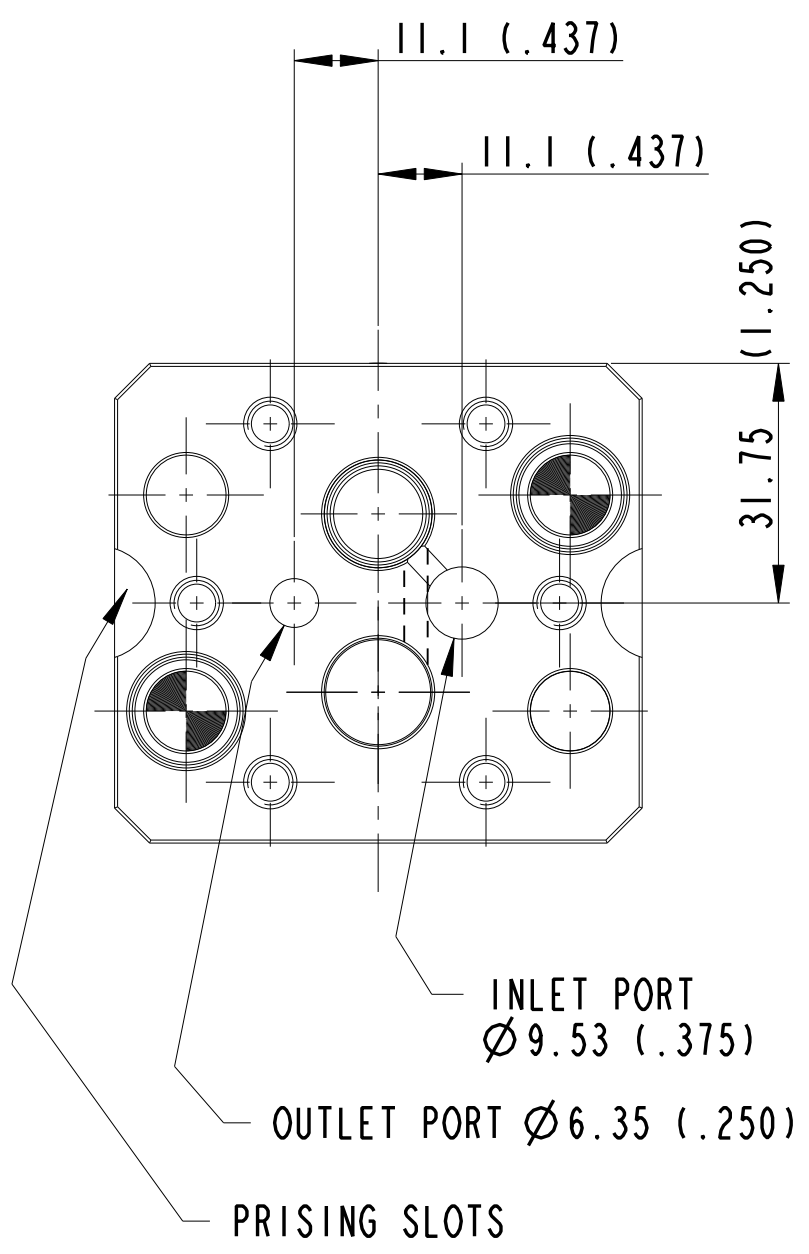
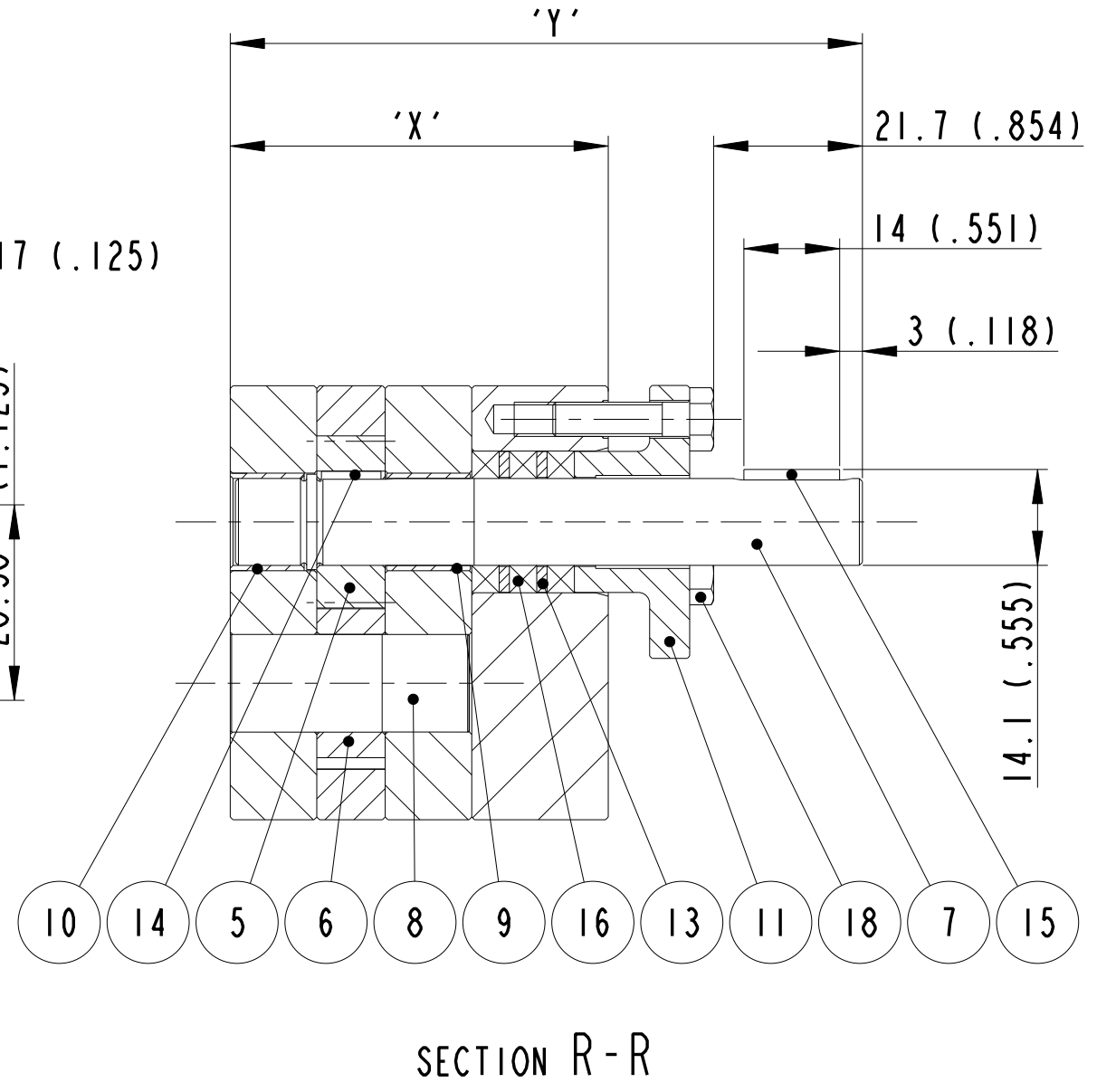
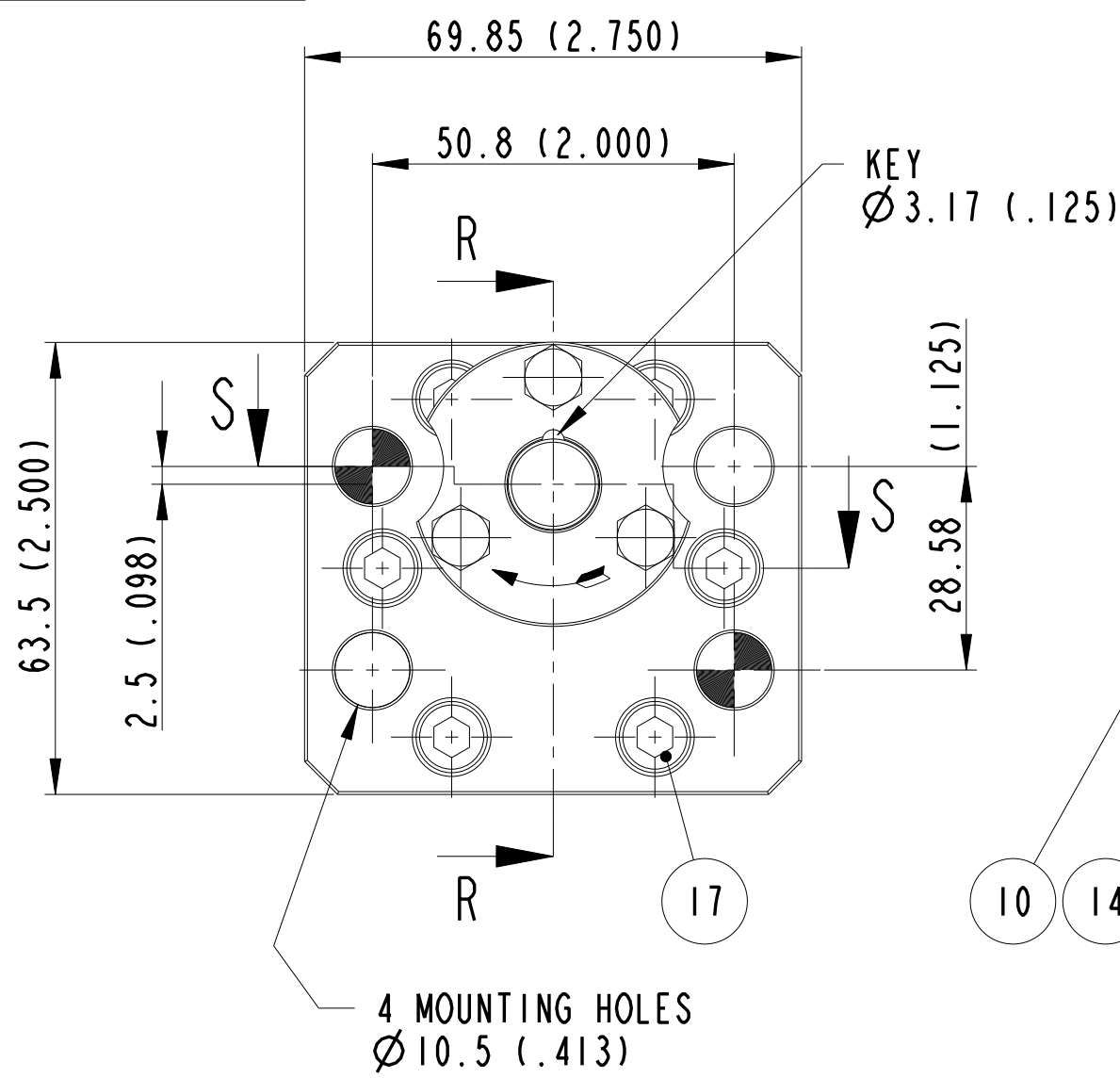


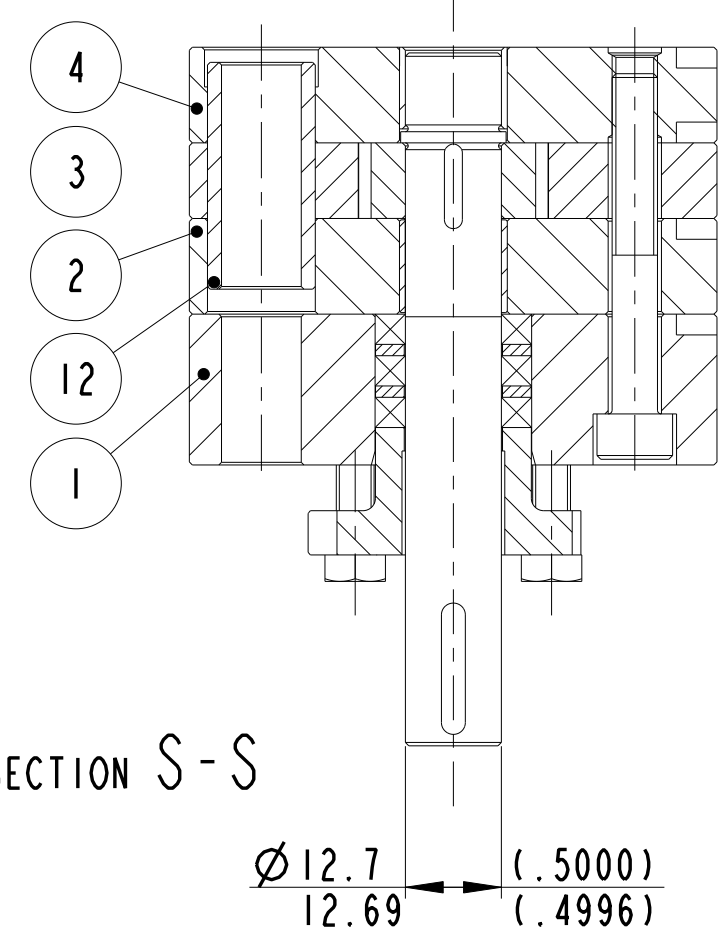
PROJ. 
 DOS/005 REFERS

DO NOT SCALE

CAD ORIGINAL DO NOT ALTER BY HAND

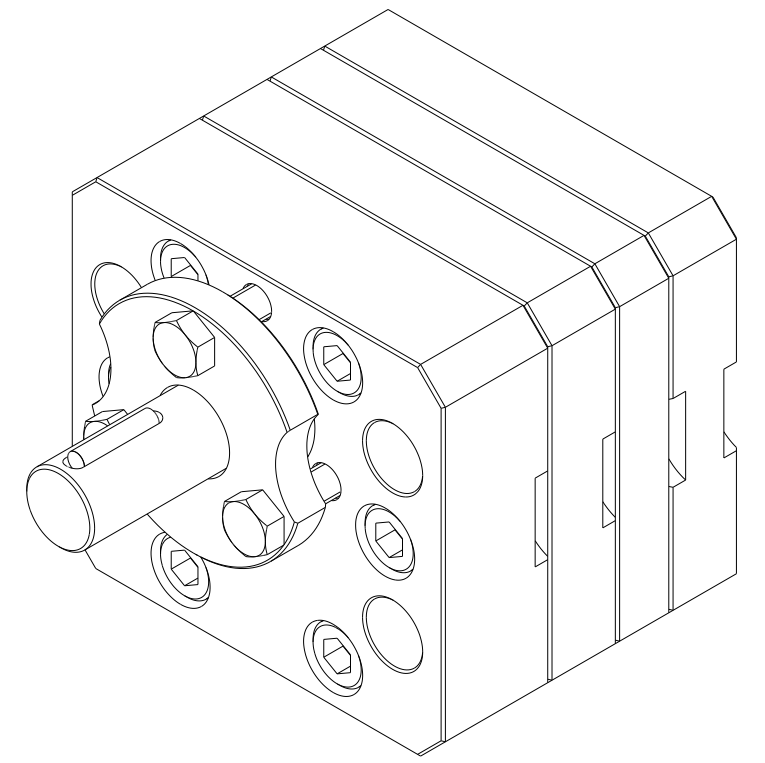


ITEM	DESCRIPTION	QTY
1	HUB PLATE	1
2	FRONT PLATE	1
3	GEAR PLATE	1
4	BACK PLATE	1
5	DRIVING GEAR	1
6	IDLER GEAR	1
7	DRIVING SPINDLE	1
8	IDLER SPINDLE	1
9	BUSH F.P.	1
10	BUSH B.P.	1
11	GLAND FOLLOWER	1
12	DOWEL	2
13	SPACING WASHER	2
14	KEY (INNER)	1
15	KEY (OUTER)	1
16	GLAND PACKING	3
17	CAPSCREW	6
18	HEX HD SCREW	3



ROTATION :- CLOCKWISE

PUMP TYPE	CAPACITY/REV	DIM 'X'	DIM 'Y'
SPH0150	0.150cc	47.3 (1.863)	84.5 (3.327)
SPH0292	0.292cc	47.9 (1.886)	85.1 (3.350)
SPH0584	0.584cc	50.4 (1.984)	87.6 (3.449)
SPH1168	1.168cc	55.4 (2.181)	92.6 (3.646)
SPH1200	1.2cc	55.6 (2.189)	98.6 (3.882)
SPH1752 / SPH1752-SI	1.752cc	60.4 (2.377)	97.6 (3.843)
SPH2400	2.4cc	65.8 (2.591)	108.8 (4.283)
SPH2920 / SPH2920-SI / SPH2920-SM	2.920cc	70.4 (2.772)	107.6 (4.236)
SPH3600	3.6cc	76.2 (3.000)	113.4 (4.465)



REV.		ZONE	ALTERATION	SIG. & DATE	CAT.	PROF. OF A LINE	PROF. OF A SURF.	GEOMETRIC TOLERANCE SYMBOLS REF. B.S. 308 : PART 3 : 1990	MATERIAL	DIMENSIONS IN MM & INCHES	SCALE 1:1	DATE	SLACK & PARR LTD. KEGWORTH-DERBY-ENGLAND	
I			REDRAWN	AJF 17.3.03		—	—	STRAIGHTNESS	SPEC.	SURF. TEXT IN ROUGHNESS NOS.	DR'N. REH	22-Jun-93	TITLE ARR AND INST OF HOT PUMP	
						PARALLELISM	—	FLATNESS	TREATMENT	TOL. UNLESS STATED DIMENSIONAL ± ANGULAR ±	CH'D. SPS	25-Jun-93		
						SYMMETRY	—	ROUNDNESS	HARDNESS	SIM. TO	* PLS		SHEET 1 OF 1 DRG. NO. C95852 REVISION 1	
						MACHINING	—	CYLINDRICITY	FINISH	© SLACK & PARR LTD. 1993 THE DESIGN AND INFORMATION CONTAINED IN THIS DRAWING IS STRICTLY CONFIDENTIAL AND IS THE EXCLUSIVE PROPERTY OF SLACK & PARR LIMITED AND MUST NOT BE USED, COPIED OR REPRODUCED IN PART OR WHOLE WITHOUT WRITTEN PERMISSION FROM SLACK & PARR LIMITED.				