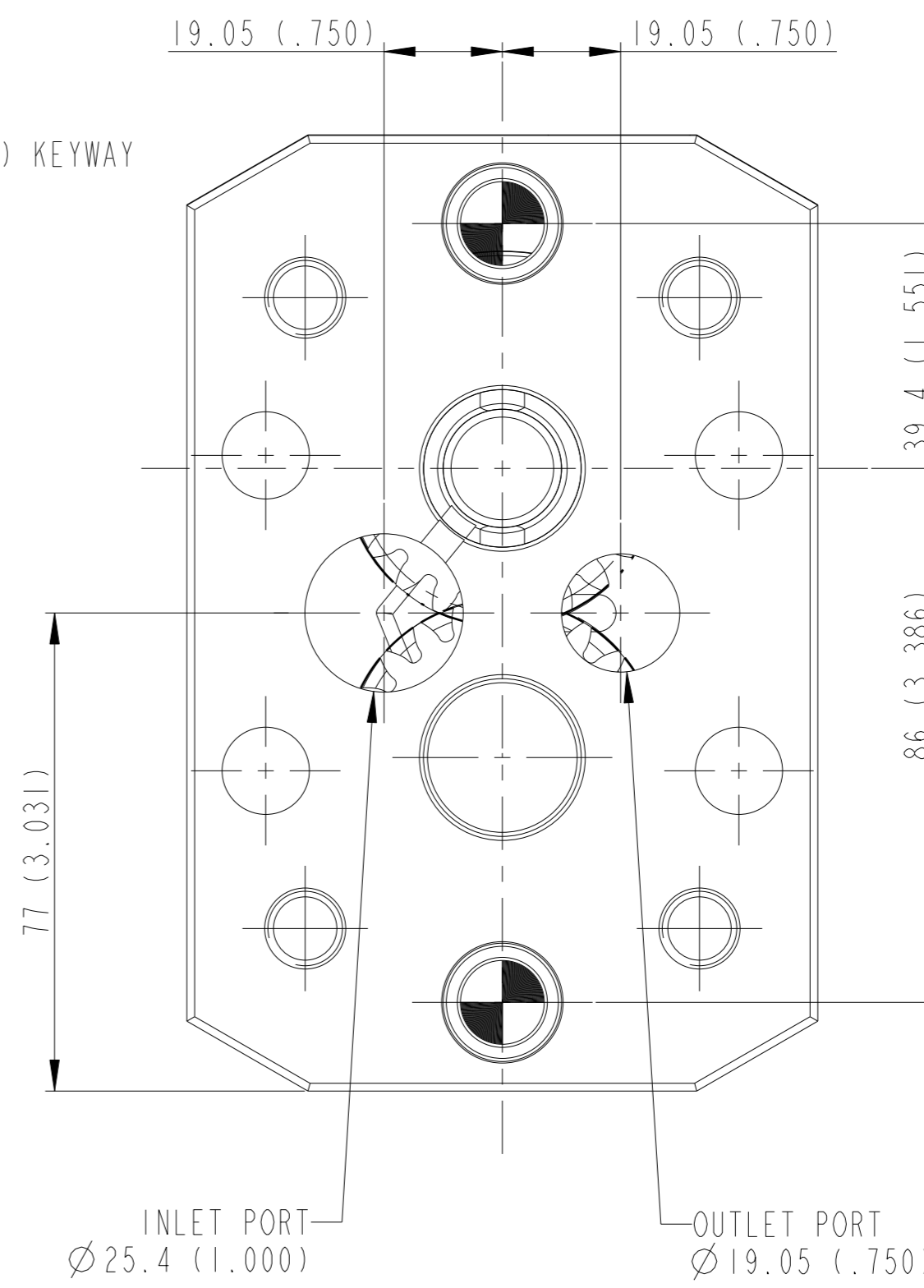
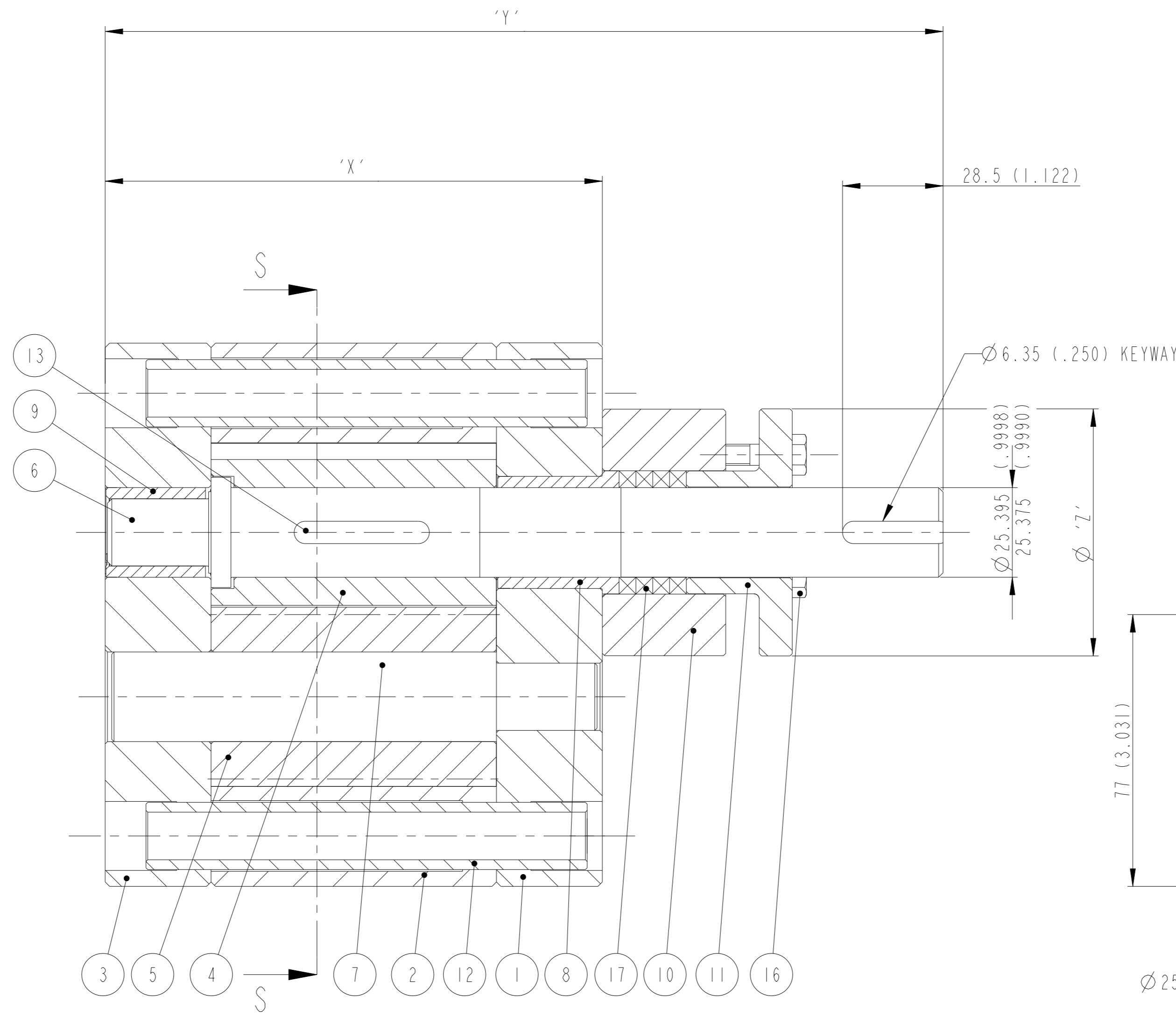
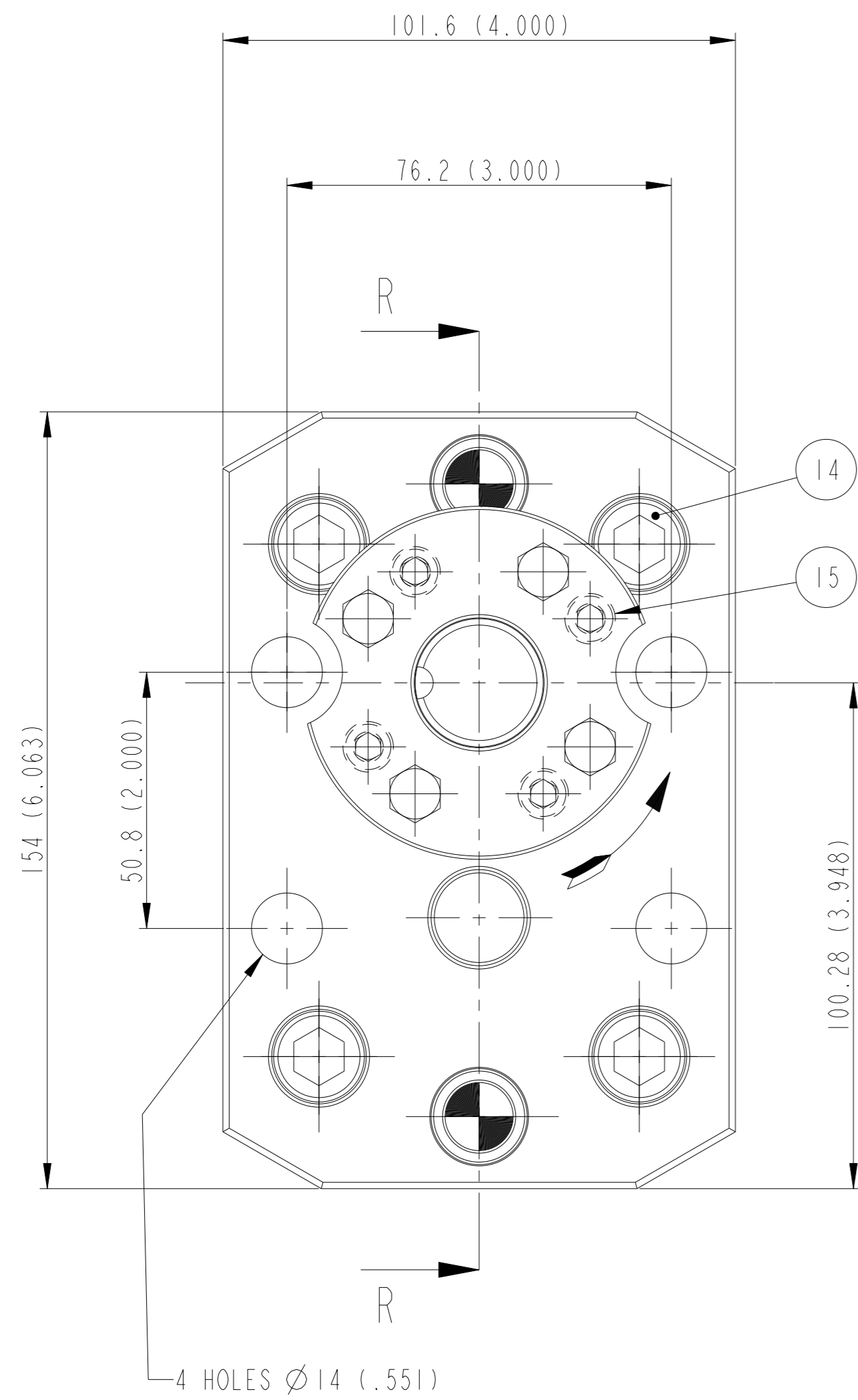


PROJ. DOS/005 REFERS

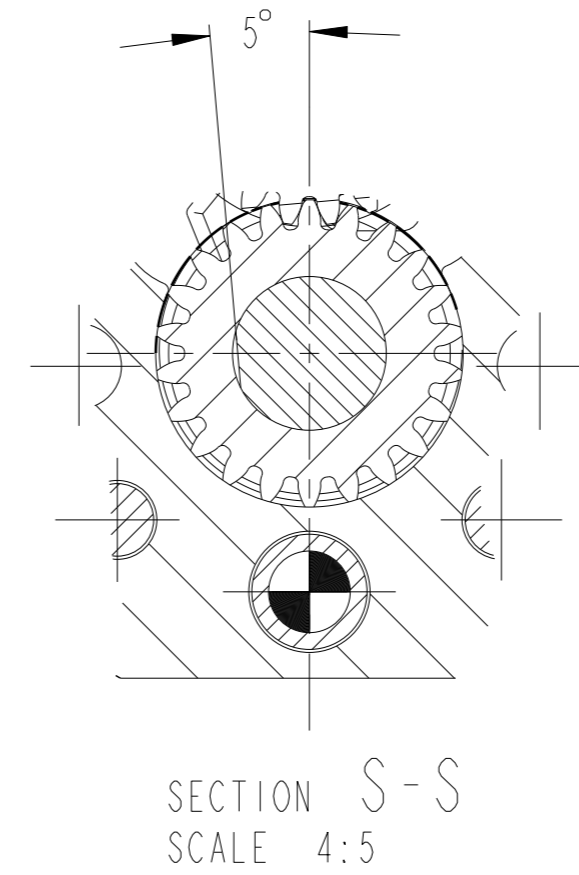
DO NOT SCALE

CAD ORIGINAL DO NOT ALTER BY HAND

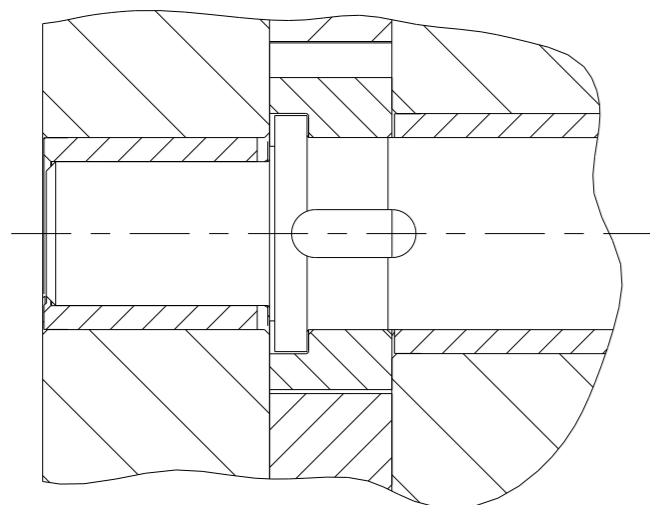


| ITEM | DESCRIPTION | QTY |
|------|-----------------|-----|
| 1 | FRONT PLATE | 1 |
| 2 | GEAR PLATE | 1 |
| 3 | BACK PLATE | 1 |
| 4 | DRIVING GEAR | 1 |
| 5 | IDLER GEAR | 1 |
| 6 | DRIVING SPINDLE | 1 |
| 7 | IDLER SPINDLE | 1 |
| 8 | BUSH F.P. | 1 |
| 9 | BUSH B.P. | 1 |
| 10 | SEALING HUB | 1 |
| 11 | GLAND FOLLOWER | 1 |
| 12 | DOWEL | 2 |
| 13 | KEY | 1 |
| 14 | CAPSCREW | 4 |
| 15 | CAPSCREW | 4 |
| 16 | HEX HD SCREW | 4 |
| 17 | GLAND PACKING | 4 |

SECTION R-R



SECTION S-S
SCALE 4:5

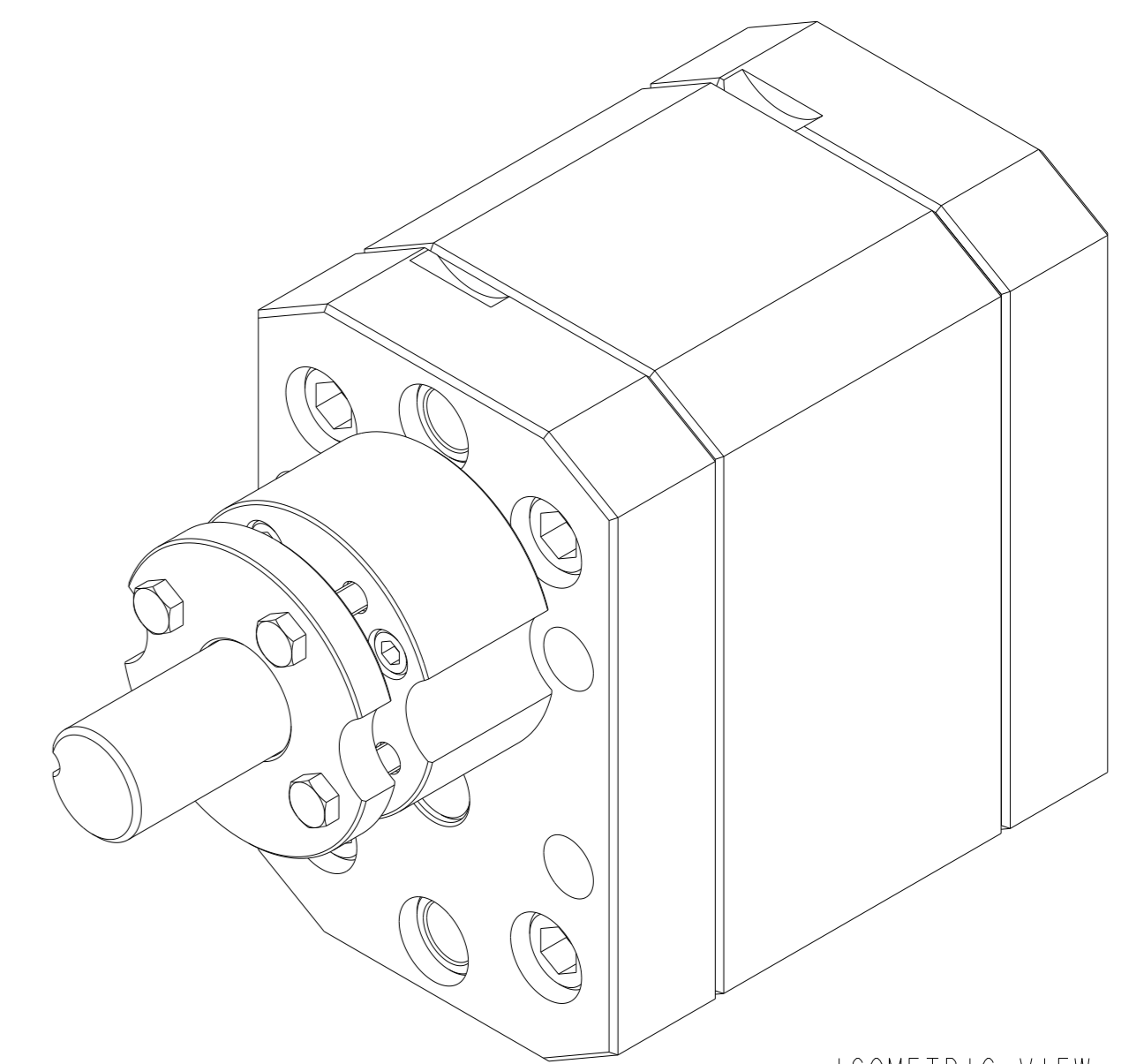


ALTERNATIVE SPINDLE ARRANGEMENT

ROTATION :- ANTI-CLOCKWISE

| TYPE | CAP/REV | DIM 'X' | DIM 'Y' | DIM 'Z' |
|-------|---------|---------------|---------------|------------|
| SPD50 | 50cc | 140.9 (5.547) | 238.2 (9.378) | 70 (2.756) |
| | 40cc | 124.7 (4.909) | 222 (8.740) | 70 (2.756) |
| | 30cc | 108.6 (4.276) | 205.9 (8.106) | 70 (2.756) |
| | 25cc | 100.5 (3.957) | 197.8 (7.787) | 70 (2.756) |
| SPD20 | 20cc | 92.4 (3.638) | 189.7 (7.469) | 70 (2.756) |
| SPD10 | 10cc | 76.2 (3.000) | 173.5 (6.831) | 70 (2.756) |
| | 6cc | 72.1 (2.839) | 169.4 (6.669) | 70 (2.756) |

SEE ALTERNATIVE SPINDLE ARRANGEMENT



ISOMETRIC VIEW
SCALE 3:4

| REV. | ZONE | ALTERATION | SIG. & DATE | CAT. | PROF. OF A SURF. | GEOMETRIC TOLERANCE SYMBOLS REF. B.S. 308 : PART 3 : 1990 | MATERIAL | DIMENSIONS IN MM & INCHES | SCALE 1:1 | DATE | SLACK & PARR LTD. KEGWORTH-DERBY-ENGLAND | | |
|------|------|------------|-------------|------|------------------|---|-----------|---|---------------------------------|-----------|---|---------------------|----------|
| | | | | | | STRAIGHTNESS — PARALLELISM // SYMMETRY ≡ | SPEC. | SURF. TEXT IN ROUGHNESS NOS. | DR 'N. DLB | 12-Jun-13 | | | |
| | | | | | | FLATNESS ▭ SQUARENESS ⊥ M.M.C. | TREATMENT | TOL. UNLESS STATED DIMENSIONAL ± ANGULAR ± | CH'D. AJF | 21-Jun-13 | PROJ./TYPE/SERIAL NO. | | |
| | | | | | | ROUNDNESS ○ ANGULARITY ≤ MACHINE | HARDNESS | SIM. TO B97779/2 • PLS | TITLE ARR & INST OF HOT PUMP | | | | |
| | | | | | | CYLINDRICITY ⌀ RUN OUT ↗ M/C OPTIONAL | FINISH | © SLACK & PARR LTD. 2013 THE DESIGN AND INFORMATION CONTAINED IN THIS DRAWING IS STRICTLY CONFIDENTIAL AND IS THE EXCLUSIVE PROPERTY OF SLACK & PARR LIMITED AND MUST NOT BE USED, COPIED OR REPRODUCED IN PART OR WHOLE WITHOUT WRITTEN PERMISSION FROM SLACK & PARR LIMITED | | | SHEET 1 OF 1 | DRG. NO. B109626 | REVISION |
| | | | | | | PROF. OF A LINE ⌒ POSITION ⊕ DO NOT M/C | CLASS | | | | | | |
| | | | | | | CONCENTRICITY ⊙ TAPER ▽ | PATT. | | | | | | |