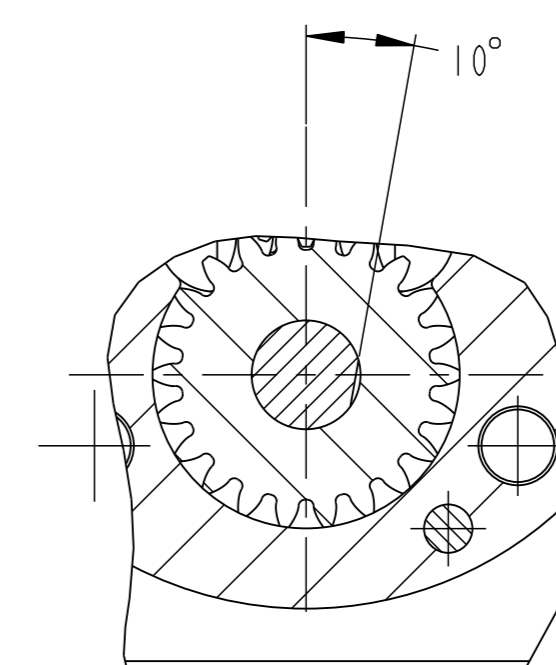
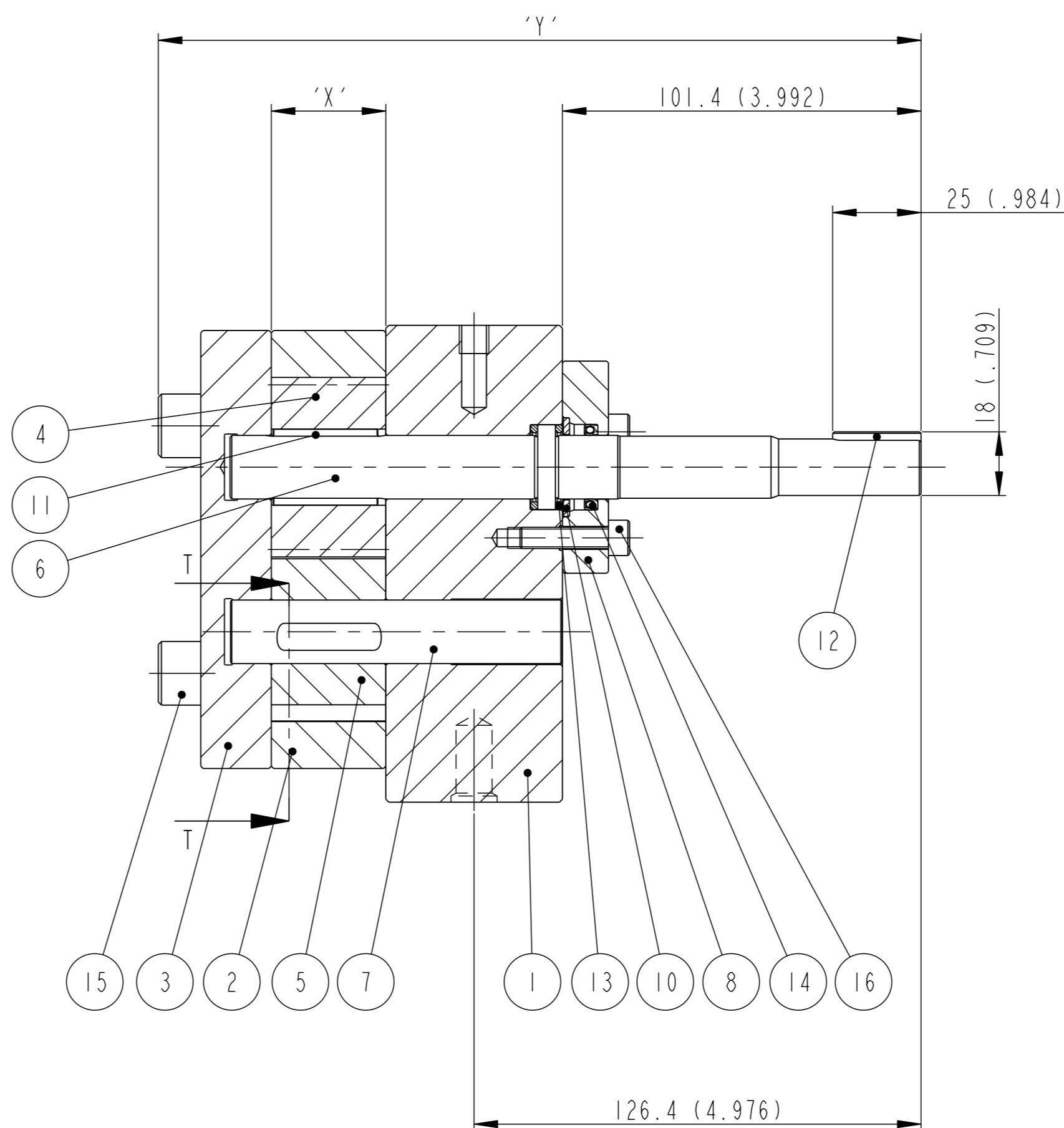
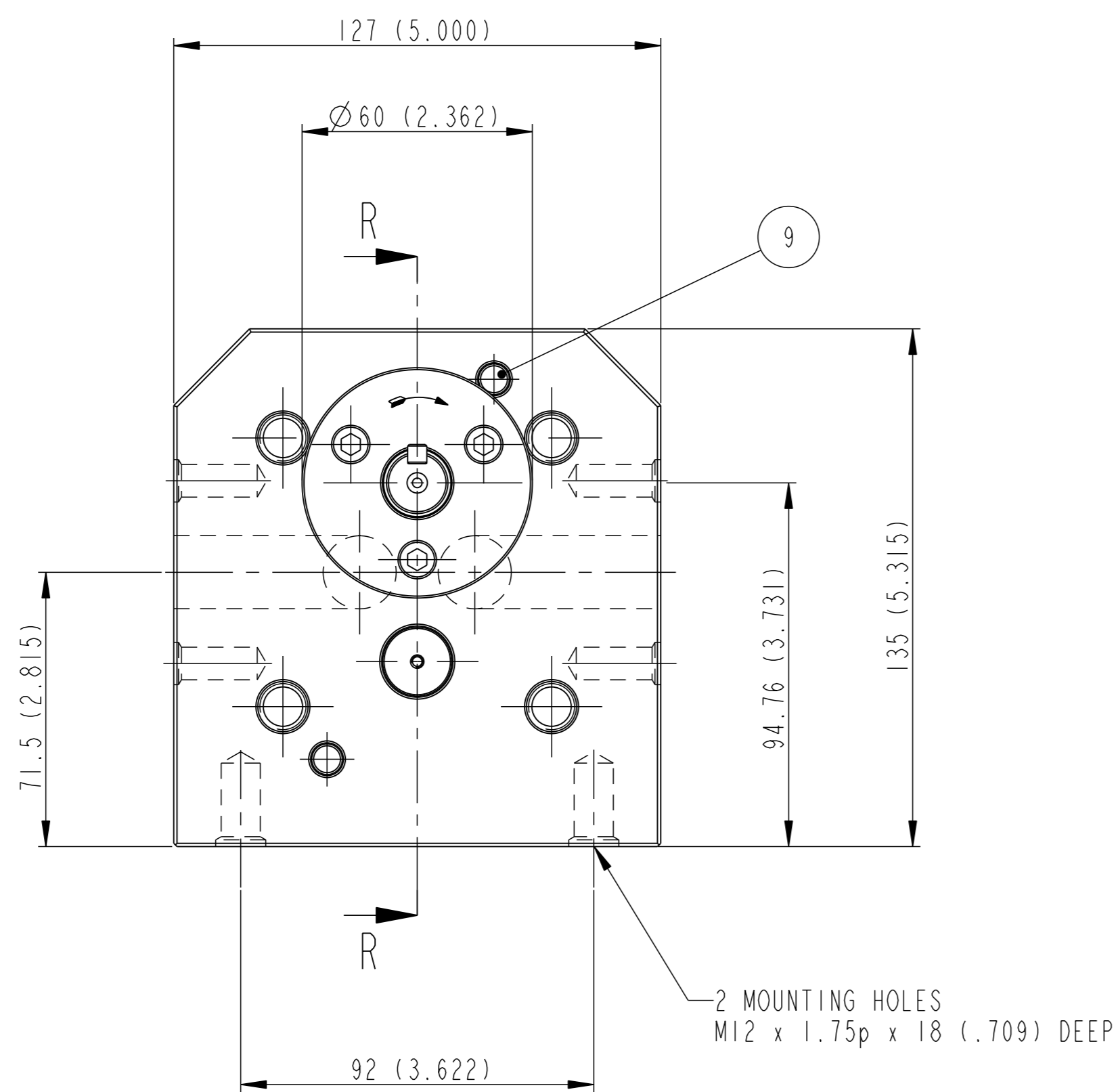


CAD ORIGINAL DO NOT ALTER BY HAND

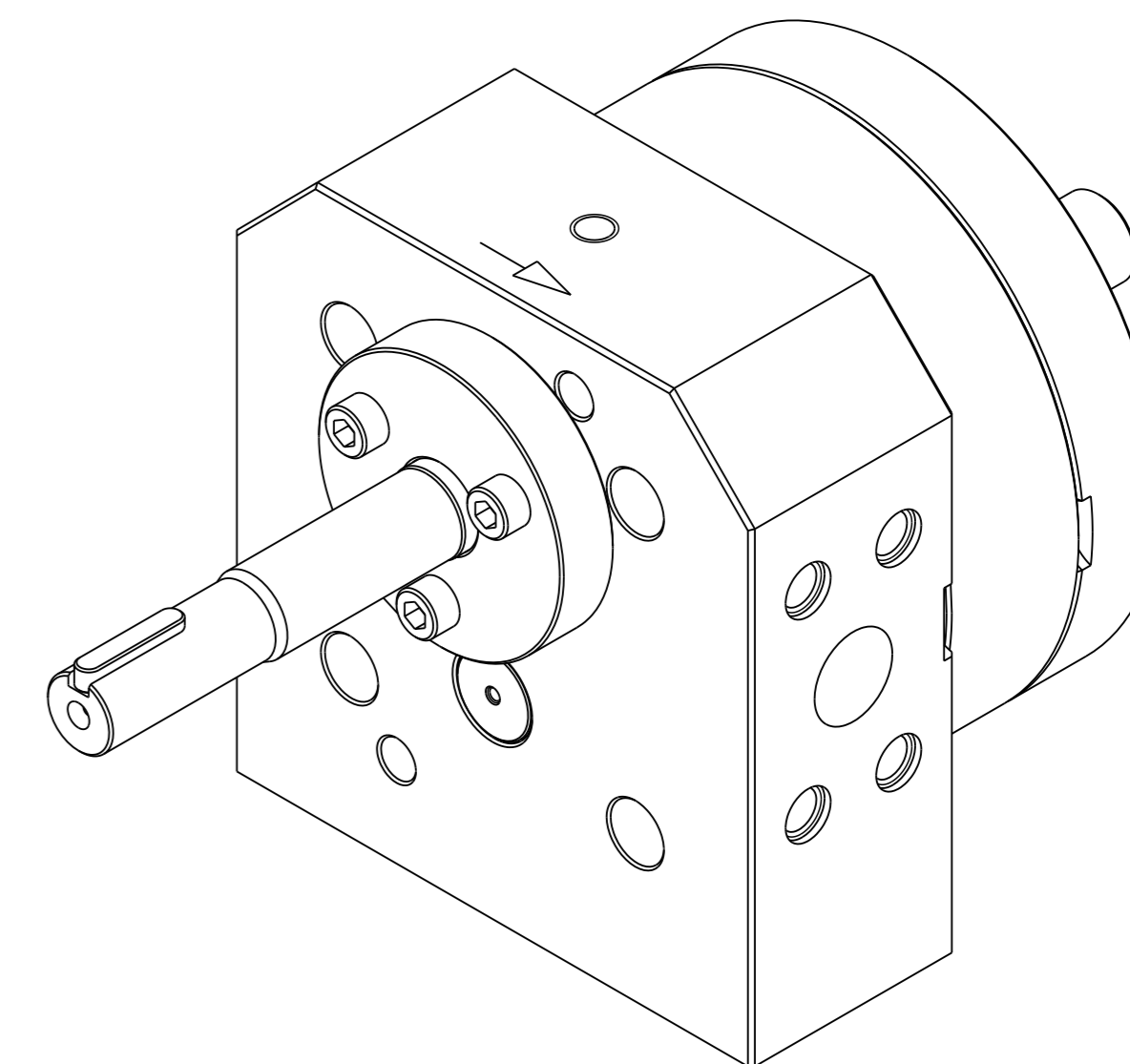
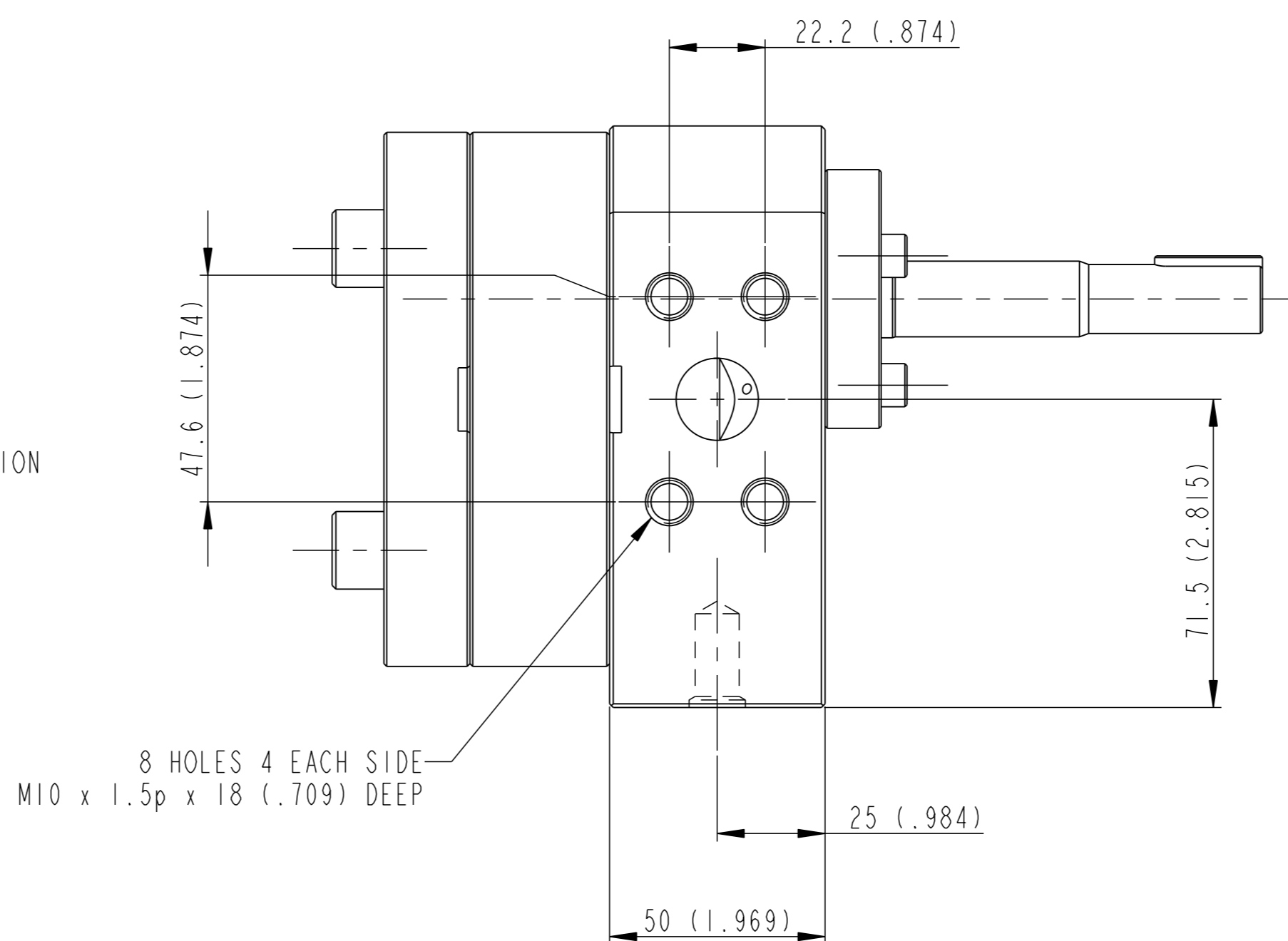
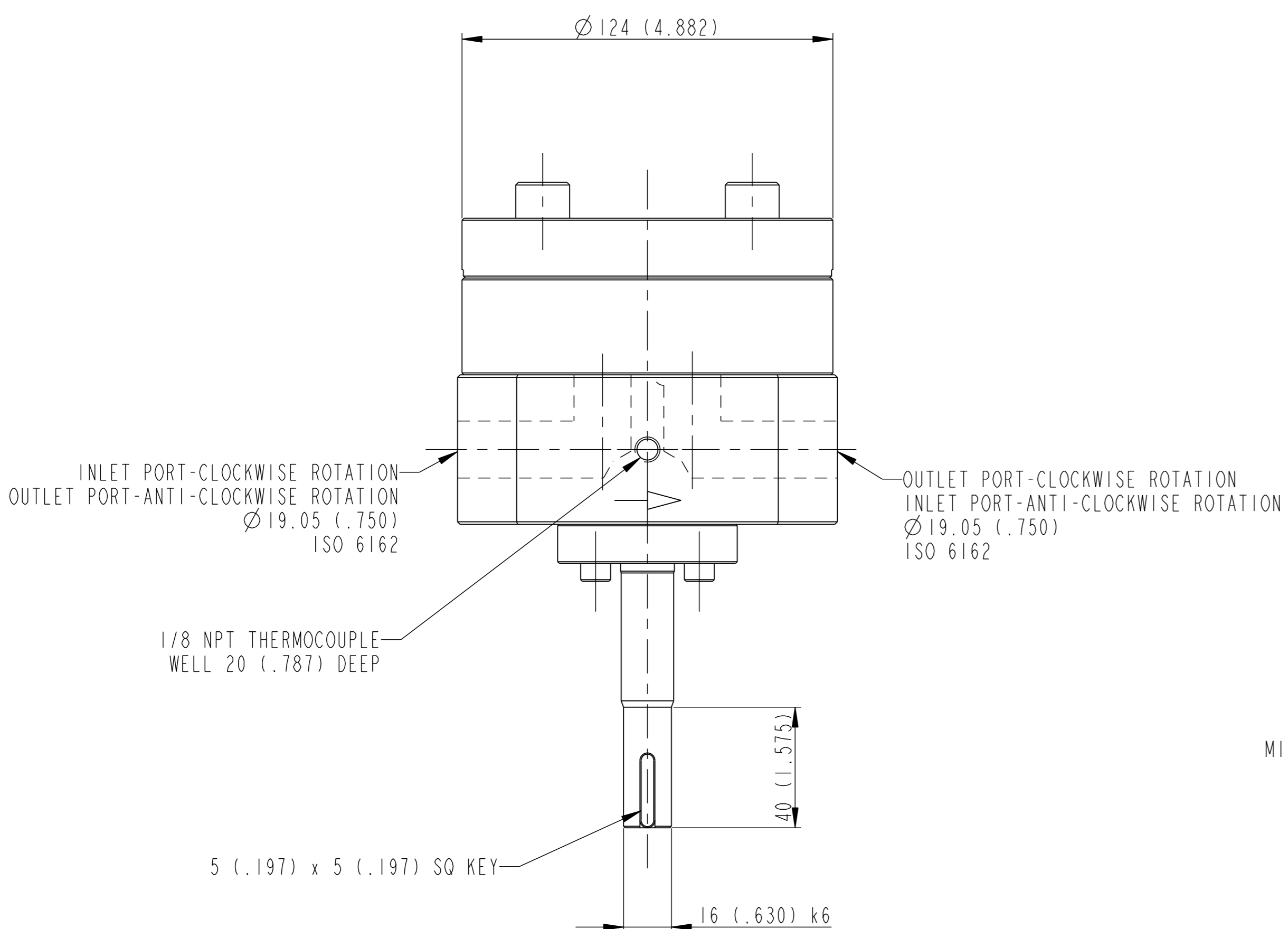
DO NOT SCALE



SECTION T-T
SCALE 4:5

| ITEM | DESCRIPTION | QTY |
|------|-----------------|-----|
| 1 | FRONT PLATE | 1 |
| 2 | GEAR PLATE | 1 |
| 3 | BACK PLATE | 1 |
| 4 | DRIVING GEAR | 1 |
| 5 | IDLER GEAR | 1 |
| 6 | DRIVING SPINDLE | 1 |
| 7 | IDLER SPINDLE | 1 |
| 8 | SEALING HUB | 1 |
| 9 | DOWEL | 2 |
| 10 | WASHER | 1 |
| 11 | KEY | 2 |
| 12 | KEY (OUTER) | 1 |
| 13 | THRUST WASHER | 2 |
| 14 | OILSEAL | 1 |
| 15 | CAPSCREW | 4 |
| 16 | CAPSCREW | 3 |

| TYPE | CAP / REV | DIMENSION 'X' | DIMENSION 'Y' | ROTATION |
|--------|-----------|---------------|---------------|-----------|
| SPA15 | 15cc | 24.4 (.961) | 207.7 (8.177) | CLOCKWISE |
| SPA20 | 20cc | 32.5 (1.280) | 215.8 (8.496) | CLOCKWISE |
| SPA20D | 20cc | 32.5 (1.280) | 215.8 (8.496) | DUAL |
| SPA30 | 30cc | 48.5 (1.909) | 228.0 (8.976) | CLOCKWISE |



| REV. | ZONE | ALTERATION | SIG. & DATE | CAT. | PROF. OF A SURF. | GEOMETRIC TOLERANCE SYMBOLS REF. B.S. 308 : PART 3 : 1990 | MATERIAL |
|------|------|------------|-------------|------|------------------|---|----------|
| | | | | | | STRAIGHTNESS — PARALLELISM // SYMMETRY ≡ | |
| | | | | | | FLATNESS ▭ SQUARENESS ⊥ M.M.C. ⊕ | |
| | | | | | | ROUNDNESS ○ ANGULARITY < MACHINING ✓ | |
| | | | | | | CYLINDRICITY ⌀ RUN OUT ↗ M/C OPTIONAL ✓ | |
| | | | | | | PROF. OF A LINE ⤴ POSITION ⊕ DO NOT M/C ✓ | |
| | | | | | | CONCENTRICITY ⊕ TAPER ▽ | |

| IDENTITY ZONE | TEXT | SCALE | DATE | DRG. NO. | REVISION |
|---|------------------|-----------|-----------------------|---|------------------|
| SCALE 4:5 | SCALE 4:5 | SCALE 4:5 | 03-APR-07 | SLACK & PARR LTD. KEGWORTH-DERBY-ENGLAND | |
| TOL. UNLESS STATED DIMENSIONAL ± ANGULAR ± | CH'D. <i>NKS</i> | 17-APR-07 | PROJ./TYPE/SERIAL NO. | | |
| SIM. TO | PLS | TITLE | | ARR & INST OF SPA PUMP | |
| © SLACK & PARR LTD. 2007 THE DESIGN AND INFORMATION CONTAINED IN THIS DRAWING IS STRICTLY CONFIDENTIAL AND IS THE EXCLUSIVE PROPERTY OF SLACK & PARR LIMITED AND MUST NOT BE USED, COPIED OR REPRODUCED IN PART OR WHOLE WITHOUT WRITTEN PERMISSION FROM SLACK & PARR LIMITED | | | | SHEET 1 OF 1 | DRG. NO. B104625 |